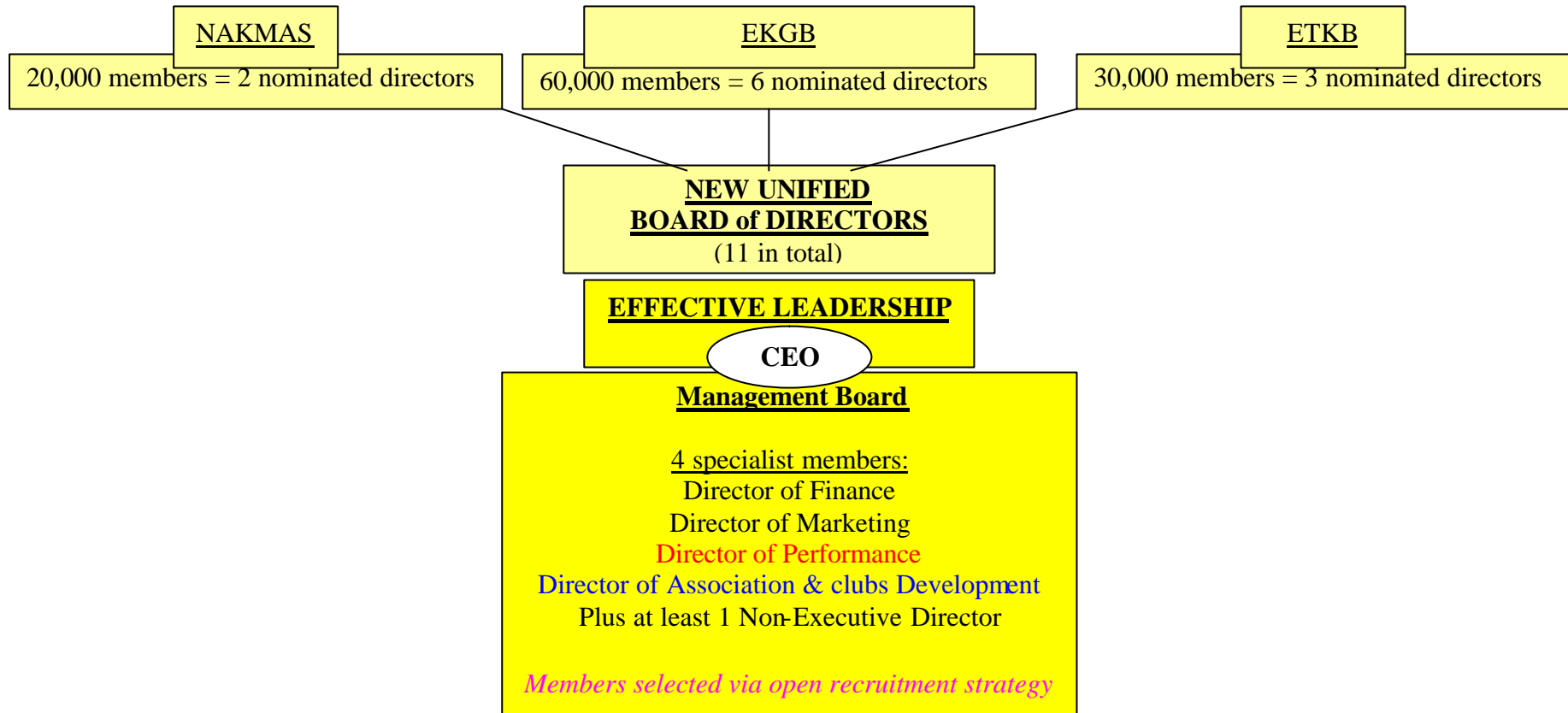


# NEW CORPORATE GOVERNANCE for AN INTEGRATED BODY 2

## JOINT BOARD OF DIRECTORS



### AGM & EGM voting procedures

Banding registration costs linked to votes-actual membership numbers divided by 250 = the Association vote:

Association with between 16,501-22,500	(5,999 increase in members)	- A maximum of 90 votes
Association with between 11,501-16,500	(4,999 increase in members)	- A maximum of 66 votes
Association with between 7,501-11,500	(3,999 increase in members)	- A maximum of 46 votes
Association with between 4,501-7,500	(2,999 increase in members)	- A maximum of 30 votes
Association with between 2,501-4,500	(1,999 increase in members)	- A maximum of 18 votes
Association with between 1,501-2,500	(999 increase in membership)	- A maximum of 10 votes
Association with between 751-1,500	(749 increase in members)	- A maximum of 6 votes
Association with between 251-750	(499 increase in members)	- A maximum of 3 votes
Association with a minimum of 250	(250 in membership)	- A maximum of 1 vote